

GOGA MARİNE
ELEKTRİK SANAYİ VE TİC. LTD. ŞTİ.

HIGH QUALITY,
EFFICIENT AND
PROFESSIONAL
WORKFORCE

**MARINE
ELECTRICAL
SOLUTIONS**



ABOUT US

As GOGA MARINE, we provide ship repair and maintenance services on the day; Our company, which stands out with quality products and quality service, makes products suitable for your budget with economic solution suggestions. It brings your dreams to life by expert, talented and qualified teams.

MISSION

To be in an effort to create a value by using our expertise in the sector to meet the expectations of our customers.

VISION

It produces services at quality standards accepted all over the world; Our mission is to become a leader with our policy of continuous improvement by following the developments in the sector by contributing to the business world and the country's economy and making a difference in the field we operate in order to maximize our reputation and to create a better tomorrow than today, aiming to integrate with its employees, customers and suppliers

RELIABLE,
QUALITY AND
HIGH CUSTOMER
SATISFACTION



GOGA MARINE
ELEKTRİK SANAYİ VE TİC. LTD. ŞTİ.

OUR SERVICES

SHIP ELECTRICAL AND ELECTRONIC EQUIPMENT

Production, purchasing, wiring, connection and commissioning processes are carried out in accordance with the class rules under the responsibility of our company by ensuring coordination according to the needs of the projects with our experienced field staff.

SHIP REPAIR & MAINTENANCE

As Goga Marine, we provide repair, maintenance, renovation and inspection services, including docking and pier repairs, at all ports, floating, offshore, anchorage sites, shipyards with 7/24 price advantage.

YACHT

GOGA Marin, continuous service areas develop in parallel to the development of yachting in Turkey has become one of the industry's defining institutions in the region. Believing that the total qualification of the employees directly determines the quality of work and service, GOGA Marin; With its team consisting of experienced people who are experts in their fields and have the necessary training and certification in all departments, Yacht Electric and Electronic systems are carried out from the design stage to the commissioning process.



GOGA MARINE
ELEKTRİK SANAYİ VE TİC. LTD. ŞTİ.



OUR SERVICES

PROJECT&ENGINEERING

It is one of our company policies to realize rational and economical solutions that offer customer-oriented solutions thanks to our experienced team and engineers during the design and implementation of the electrical panels - load analysis, the design and implementation of the produced automation systems in the refit works of the ship motor yachts and sailboats carried out within our company. has been.

ELECTRIC PANEL MANUFACTURING

In the new building and refit projects carried out within our company;

Main Board

Distribution

Panels

Automation System

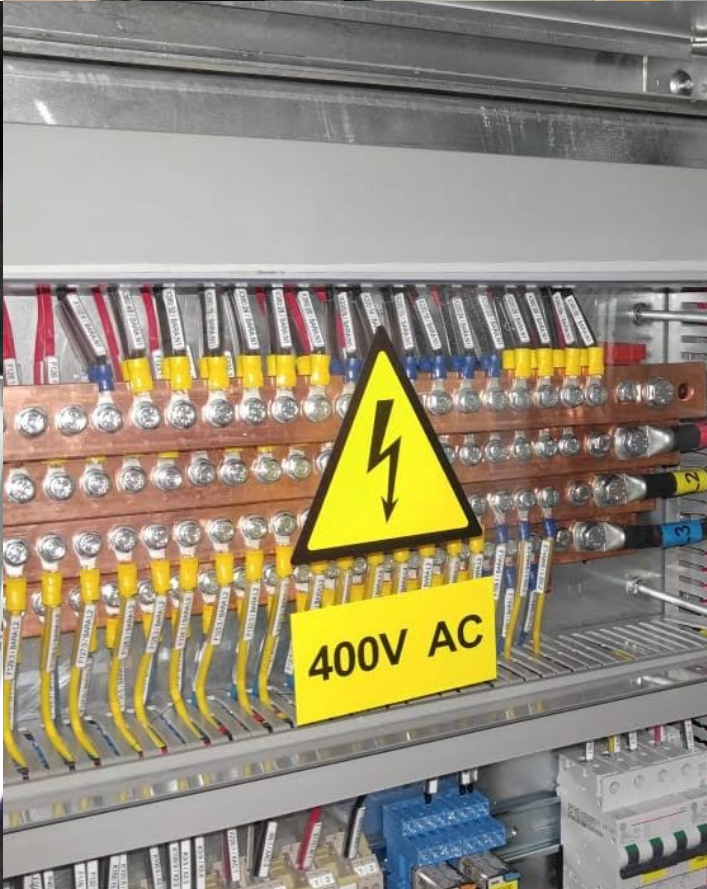
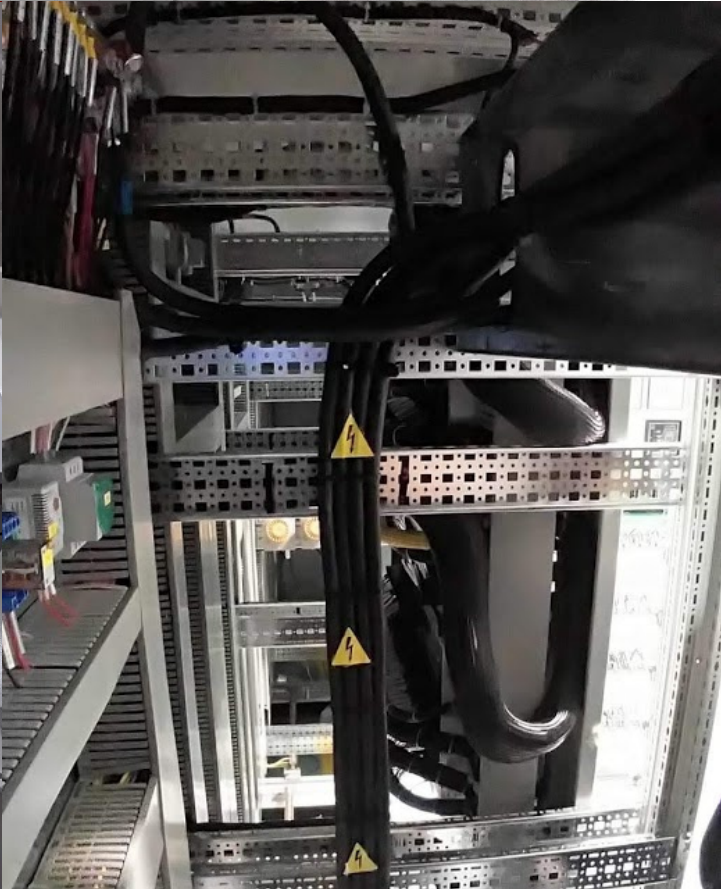
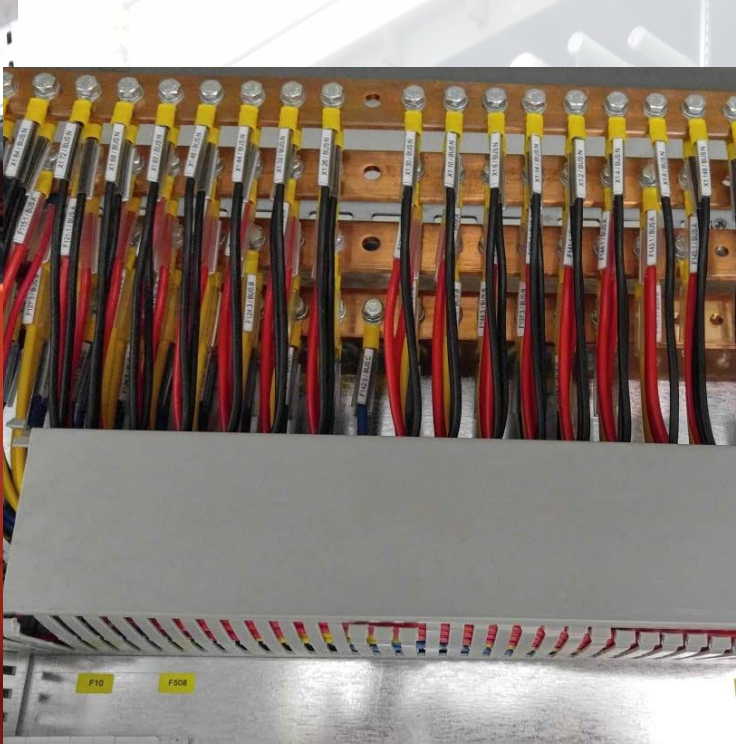
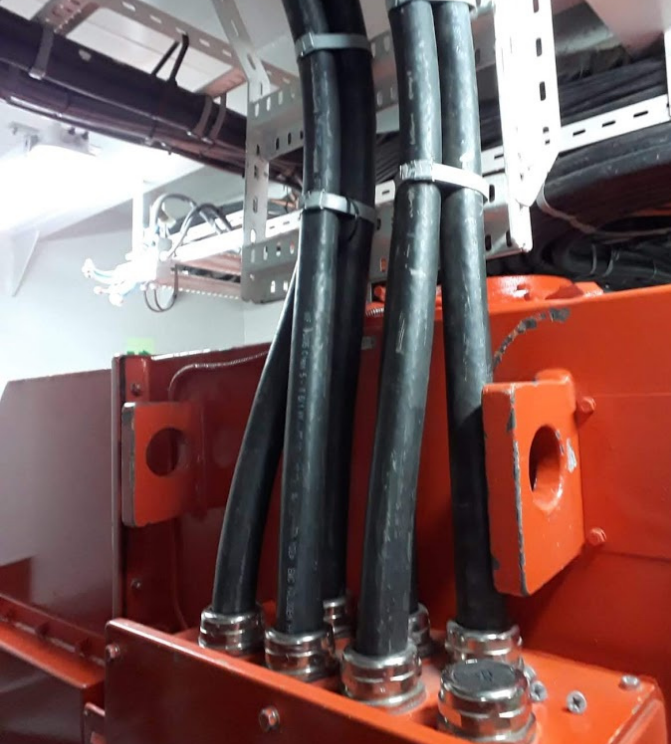
Dashboard and Integrations

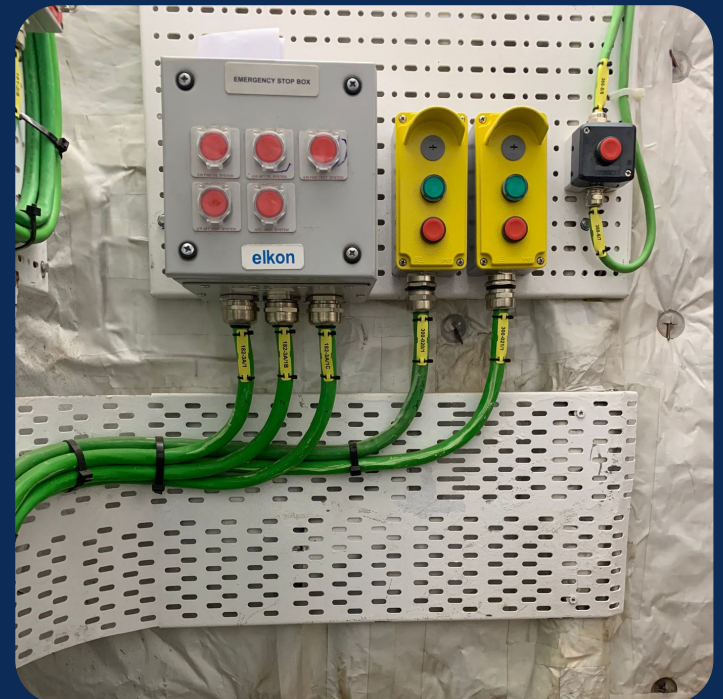
Boutique Application

and solutions

We serve with our experienced manufacturing staff with manufacturing discipline for electrical services that require















NB 83 SMOLA

DELIVERY DATE

Q3, 2019

TYPE

PESSENGER VESSEL

CUSTOMER

HAVYARD GROUP A.S.

DESING

HAVYARD SHIP DESING

CLASS

DNV-GL

LENGTH

67,2 m

WINDTH

14,8 m

DEPTH

5,5 m

DRAFT (SCANTLING)

3,75 m

SHIPYARD

CEMRE





NB 87 REISA

| | |
|-------------------|---------------------|
| DELIVERY DATE | Q4, 2019 |
| TYPE | LIVE FISH CARRIER |
| CUSTOMER | HAVYARD GROUP A.S. |
| DESING | HAVYARD SHIP DESING |
| CLASS | DNV-GL |
| LENGTH | 84,80 m |
| WINDTH | 16,90 m |
| DEPTH | 8 m |
| DRAFT (SCANTLING) | 6,5 m |
| SHIPYARD | CEMRE |



NB 118 IHC HOOPER

| | |
|-----------------|------------|
| LEAGHT OVERALL | 87,25 m |
| LBP | 79,10 m |
| BREADTH | 19,60 m |
| DEPTH | 7,50 m |
| HOPPER CAPACITY | 4.000 m3 |
| DREDGING DEPTH | 25 m |
| LOADED SPEED | 12,9 knots |
| SHIPYARD | ADA |





NB120 NORLED CAR FERRY

| | |
|-----------------|--------------------------------|
| LEAGTH OVER ALL | 74.00 m |
| RULE LEAGHT | 72.00 m |
| MOULDED BREADTH | 14,00 m |
| BREADTH EXTREME | 14,50 m |
| DRAUGHT MAX | 3,20 m |
| FRAME SPACING | 0,60 m |
| CLASS | DNVGL + 1ALC CAR FERRY B E0 R4 |
| FLAG | NMD TRADE AREA 2 |
| PRODUCTION DATE | 2020 |
| SHIPYARD | ADA |





NB 146 ESVAGT 01

| | |
|-------------------|--------------------------|
| DELIVERY DATE | Q1, 2020 |
| TYPE | SERVICE OPERATION VESSEL |
| CUSTOMER | HAVYARD GROUP A.S. |
| DESING | HAVYARD SHIP DESING |
| CLASS | BV |
| LENGTH | 70,5 m |
| WIDTH | 16,6 m |
| DRAFT (SCANTLING) | 5,6 m |
| SHIPYARD | CEMRE |





NB 148 ESVAGT 02

| | |
|-------------------|--------------------------|
| DELIVERY DATE | Q1, 2020 |
| TYPE | SERVICE OPERATION VESSEL |
| CUSTOMER | HAVYARD GROUP A.S. |
| DESING | HAVYARD SHIP DESING |
| CLASS | BV |
| LENGTH | 70,5 m |
| WIDTH | 16,6 m |
| DRAFT (SCANTLING) | 5,6 m |
| SHIPYARD | CEMRE |



**CEMRE
SHIPYARD**



NB 149 ESVAGT 03

| | |
|-------------------|--------------------------|
| DELIVERY DATE | Q2, 2020 |
| TYPE | SERVICE OPERATION VESSEL |
| CUSTOMER | HAVYARD GROUP A.S. |
| DESING | HAVYARD SHIP DESING |
| CLASS | BV |
| LENGTH | 70,5 m |
| WIDTH | 16,6 m |
| DRAFT (SCANTLING) | 5,6 m |
| SHIPYARD | CEMRE |



NB 205 LIVE FISH CARRIER

| | |
|-------------------------|------------------------------|
| BUILD FOR | FITJAR MEKANISKE VERKSTED AS |
| DELIVERY DATES | UNDER CONSTRUCTION |
| CONTRACT DELIVERY DATES | 31.09.2019 |
| CLASSIFICATION SOCIETY | DNVGL |
| CLASS NOTATION | DNVGL+ 1A E0 |
| LENGTH (LOA) | 84,10 m |
| BEADTH (MOULDED) | 18 m |
| SCANTLING DRAUGHT | 8,5 m |
| DEPTH (MAIN DECK) | 7,4 |
| SHIPYARD | SEDEF |

SEDEF
SHIPYARD



OCEAN APOLLO

| | |
|---------------|----------|
| LENGTH O.A | 14,96 m |
| LENGTH P.P | 13,50 m |
| BEAM | 7 m |
| DRAFT | 2,15 m |
| TONNAGE | 98 gt |
| SERVICE SPEED | 10 knots |
| YEAR OF BUILD | 2020 |
| SHIPYARD | GISAN |



**OCEAN FARM
SERVICES**



22 XP

| | |
|-----------------------------|---------------------|
| LENGTH OVERALL | 22.00 m |
| BEAM | 6.00 m |
| DISPLACEMENT LIGHT SHIP | 52 t |
| FUEL CAPACITY | 5,000 lt |
| DRAFT | 1,90 m |
| INTERNATIONAL GROSS TONNAGE | UNDER 150 GT |
| ENGINES | CUMMINGS 6,7 425 hp |
| MAX SPEED | 12,5 knots |
| MAX RANGE | 2.000 nm |
| SHIPYARD | NU MARINE |

NUMARINE



26 XP

| | |
|-----------------------------|--------------|
| LENGTH OVERALL | 25,89 m |
| BEAM | 6,60 m |
| DRAFT INC. PROPELLES | 2,12 m |
| DISPLACEMENT LIGHT SHIP | 77,6 Tonne |
| DISPLACEMENT FULL LOAD | 93 Tonne |
| FUEL CAPACITY | 10.000 lt |
| LENGHT OF HULL | 23,95 m |
| INTERNATIONAL GROSS TONNAGE | UNDER 150 GT |
| SHIPYARD | NU MARINE |

NUMARINE



NB 35 ELECTRIC RO-RO CAR & PASSENGER FERRY

| | |
|-------------------------|--|
| LEAGTH OVERALL | 84,5 m |
| BEAM MOULDED | 17 m |
| DRAUGHT MAXIMUM | 4,1 m |
| CAPACITY | 83 PCU / 299 PASSENGER AND CREW |
| CLASS | DET NORSKE VERITAS |
| FLAG | NORWAY |
| MAIN PROPULSION GENSETS | 2 x CAT C32 830 kW _e 1500 rpm |
| MAIN THRUSTERS | 2 x ROOLS ROYCE AZIPULL 085 CP L |
| SHIPYARD | DRIVE SEFINE |



NB66 OLYMPIC PRAWN

| | |
|---------------------|-------------------------|
| DELIVERY DATE | Q2, 2020 |
| TYPE | STERN TRAWLER |
| CUSTOMER | OLYMPIC SEAFOOD AS |
| DESING | ROOLS ROYCE SHIP DESIGN |
| CLASS | DNV GL |
| LENGTH | 69,9 m |
| WIDTH | 16 m |
| DEPTH | 9,25 m |
| CARGO HOLD CAPACITY | 1403 m3 |
| SHIPYARD | CEMRE |



NB72 GROENEWIND

| | |
|---------------|----------------------------|
| DELIVERY DATE | Q3, 2021 |
| TYPE | WINDFARM SUPPORT VESSEL |
| CUSTOMER | DEME GROUP |
| DESING | VUKY ENGINEERING ROTTERDAM |
| CLASS | BV |
| LENGTH | 61,7 m |
| SHIPYARD | CEMRE |



**CEMRE
SHIPYARD**



NB212-213-215 ELECTRIC FERRY

| | |
|------------------------|-----------------------------------|
| BUILD FOR | BOREAL |
| NAME | MALMEDJORD-TOMREFJORD-VESTREFJORD |
| DELIVERY DATE | 2020/2021 |
| CLASSIFICATION SOCIETY | DNVGL |
| FLAG | NORVEGIAN |
| LENGTH OVERALL | 108,80 m |
| LENGTH CAR DECK | 103,80 m |
| BREADTH | 17,70 m |
| TONNAGE | 2850 GRT |
| SPEED | 14,00 knots |
| SHIPYARD | SEDEF |

SEDEF
SHIPYARD



NB69

LOA: 75m

Beam overall: 14.20m

Draft: 4.10m

GT: 1680 Approx.

Speed: 17 Knots Approx.

Class: Lloyd's Register of Shipping; +100 A1

SSC Yacht Mono G6,+ LMC, UMS

Flag: Cayman Islands

Exterior Designer: A. Vallicelli Yacht Design

Interior Designer: SINOT

Naval Architect: Turquoise Yachts

TURQUOISE
YACHTS



TBN

PROJECT NO: NB103

OVERALL LENGTH: 12.10m

TYPE: TUGBOAT

DESIGN: 3GA SHIP DESIGN

CLASS: TRANSPORT CANADA

BUILT FOR: SEAFOORTH ENVIRONMENTAL



MARINE[®]
TEAM WORK



SIRAPINAR

BOLLARD PULL: 50 Tons
OVERALL LENGTH: 22.4m
BEAM: 10.84m
TYPE: ASD TUGBOAT
DESIGN: ROBERT ALLAN Ltd.
CLASS: ABS





SEIFJELL

CARGO HOLD CAPACITY: 2.200m³

OVERALL LENGTH: 69.9m

WIDTH: 16.8m

DEPTH: 8.1m

TYPE: LIVE FISH CARRIER

DESIGN: SALT SHIP DESIGN

CLASS: DNV-GL



**CEMRE
SHIPYARD**



DELIÇAY

BOLLARD PULL: 75 Tons
OVERALL LENGTH: 25.3m
BEAM: 12m
TYPE: ASD TUGBOAT
DESIGN: ROBERT ALLAN Ltd.
CLASS: ABS





AQS TRYM

PROJECT NO: NB101

OVERALL LENGTH: 18.5

TYPE: SERVICE VESSEL

DESIGN: MACDUFF SHIP DESIGN

CLASS: NMA

BUILT FOR: AQS REDERI AS



MARINE[®]
TEAM WORK



NOVA FFX360

OVERALL LENGTH: 36.4m

BREADTH: 7.9m

DRAFT: 1.9m

TYPE: FIRE FIGHTING VESSEL

SPEED: 17 KNOTS

CLASS: BV

NOVA
SHIPYARD
WorkBoat



EVOLI

PROJECT NO: NB102

OVERALL LENGTH: 27.5m

TYPE: CARGO VESSEL

DESIGN: ARCO MARINE

CLASS: BV

BUILT FOR: ECOFLUV



MARINE[®]
TEAM WORK



INFINITE JEST

OVERALL LENGTH: 75m

BREADTH: 14.2m

DRAFT: 4.10m

TYPE: SUPER YACHT

MAX SPEED: 18 KNOTS

CLASS: LR

DESIGN: A.VALICELLI DESIGN

TURQUOISE
YACHTS



NOVA FX240

OVERALL LENGTH: 24m

BREADTH: 8m

DRAFT: 1.35m

TYPE: HYBRID PASSENGER FERRY

CAPACITY: 234

CLASS: BV

DESIGN: MER ET DESIGN

NOVA
SHIPYARD
WorkBoat



FUTURA

PASSENGER CAPACITY: 140 PERSON

CAR CAPACITY: 66

OVERALL LENGTH: 147.4m

BREADTH: 25.4m

DRAFT: 5.3m

TYPE: LIVE FISH CARRIER

DESIGN: LMG MARINE AS

CLASS: LR

COSTUMER: SCANDLINES





R Astar

BOLLARD PULL: 100 Tons
OVERALL LENGTH: 40.2m
BEAM: 7.1m
TYPE: LNG FUELED TUGBOAT
DESIGN: ROBERT ALLAN Ltd.
CLASS: ABS





JEWELS

OVERALL LENGTH: 53m

BREADTH: 9.3m

DRAFT: 3.25m

TYPE: SUPER YACHT

MAX SPEED: 15.5 KNOTS

CLASS: LR

DESIGN: DEBASTO DESIGN

TURQUOISE
YACHTS



9000 TONES LIFTING FLOATING DOCK

PROJECT NO: NB224
OVERALL LENGTH: 14.20m
OVERALL BEAM
OVERALL DEPTH:
LIFTING CAPACITIES: 9000 TONES
SURFACING TIME: 120 MINUTES
CLASS: ABS
BUILT FOR: AUSTAL LLC.USA

SEDEF
SHIPYARD



SEIGRUNN

CARGO HOLD CAPACITY: 8000m³

OVERALL LENGTH: 110m

WIDTH: 24.6m

DEPTH: 9m

TYPE: LIVE FISH CARRIER

DESIGN: SALT SHIP DESIGN

CLASS: DNV-GL



**CEMRE
SHIPYARD**

REFERENCES

